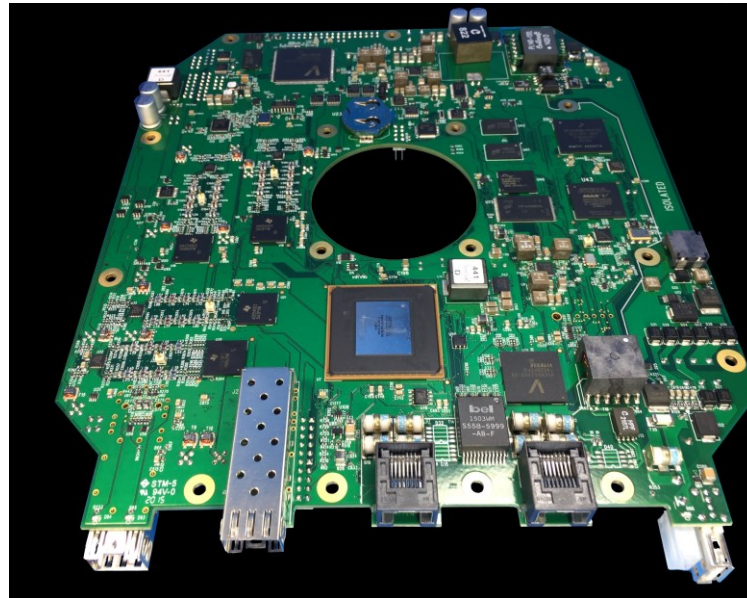


Value Proposition

- All-digital Gigabit Ethernet modem
- 680 Mbps full-duplex data rate
- Compatible with ETSI and FCC licensed bandwidths from 3.5 – 112 MHz

Applications

- LTE, WiMAX and HSDPA+ wireless backhaul
- Private networks and campus connectivity
- Fiber extensions and replacements
- High definition video surveillance and monitoring
- Triple-play (voice, data and video) transmission
- Government and campus building interconnection
- Critical infrastructure protection
- Public safety applications



All-Digital Gigabit Ethernet Modem Module

Escape Communications' ESM-11212 modem module is a complete baseband solution for point-to-point microwave radio applications compatible with all ETSI and FCC channel allocations for licensed band point-to-point operation from 6 to 42 GHz.

The ESM-11212 is an all-digital, high data rate modem that can provide up to 680 Mbps full-duplex data transport, supports up to 4096QAM modulation, and operates in arbitrary channel bandwidths up to a 112 MHz channel. The modem board includes a powerful microprocessor, power-over-Ethernet and GbE customer interface, and analog I/Q baseband interfaces to RF electronics.

Performance:

- 1024QAM over RF
- 38 dB SNR over link
- >45 dB SNR (Modem)
- Layer-2 GbE switch
 - Ethernet flow control
 - Jumbo frames
 - In Band Management
- 802.11at (PoE+)
- HTTP web GUI
- SNMP Control

